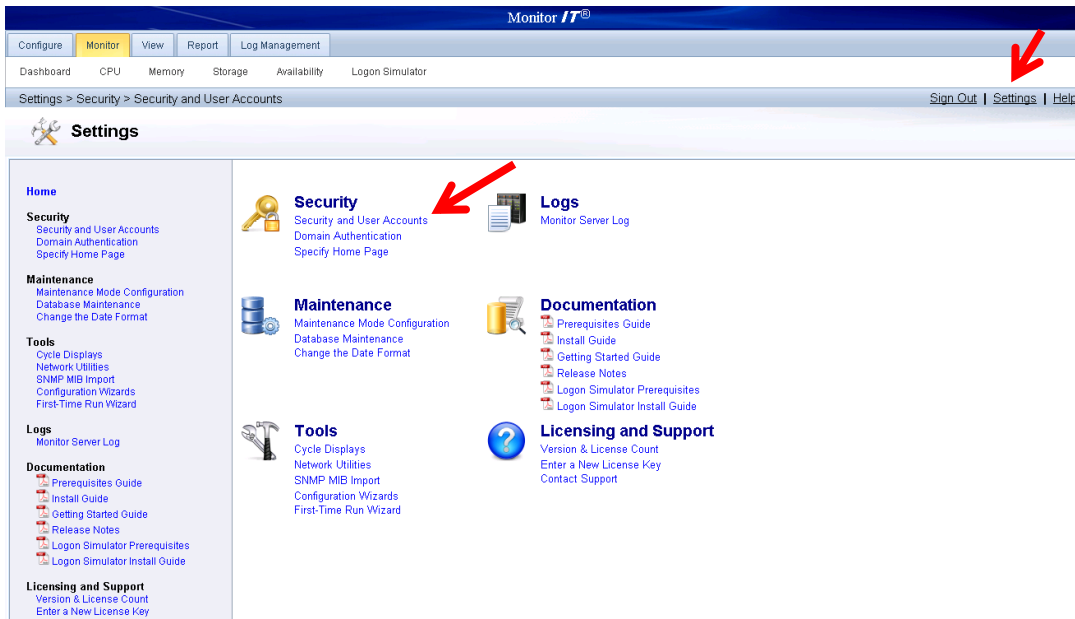


How to Configure Security in Goliath Performance Monitor

1. Open Goliath Performance Monitor, click 'Settings' in top right corner and then select 'Security and User Accounts'



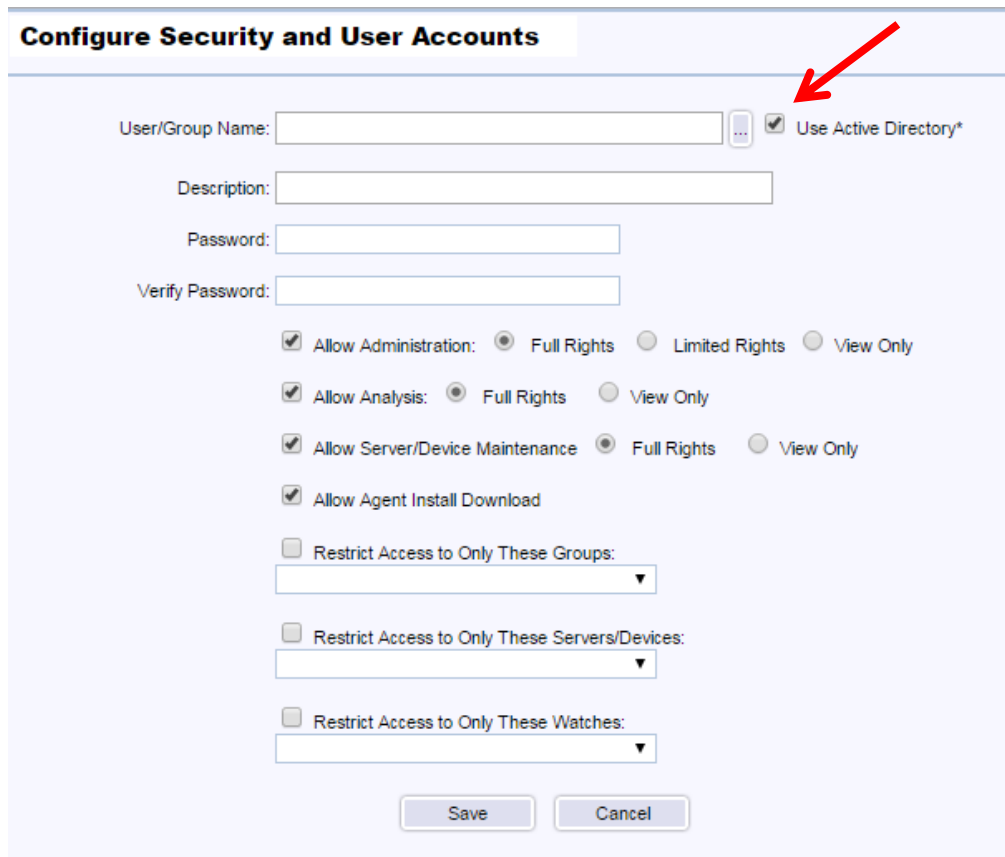
2. Choose 'New' on the 'Configure Security and User Account' page

The screenshot shows the 'Configure Security and User Accounts' page. The form has the following fields and options:

- User/Group Name:** A dropdown menu.
- Use Active Directory*:** A checkbox.
- Description:** A text input field.
- Password:** A text input field.
- Verify Password:** A text input field.
- Allow Administration:** Radio buttons for Full Rights, Limited Rights, and View Only.
- Allow Analysis:** Radio buttons for Full Rights and View Only.
- Allow Server/Device Maintenance:** Radio buttons for Full Rights and View Only.
- Allow Agent Install Download:** A checkbox.
- Restrict Access to Only These Groups:** A dropdown menu.
- Restrict Access to Only These Servers/Devices:** A dropdown menu.
- Restrict Access to Only These Watches:** A dropdown menu.
- New:** A button at the bottom, highlighted with a red arrow.

3. To have users log in with **non-domain credentials**, specify a username and password and the appropriate choices and rights they will have click save and then skip forward to step 8.
 - **Allow Administration:** Grants the user administrator privileges
 - Full Rights: Grants the user full administrative privileges
 - Limited Rights: Restricts the user from configuring Security, database settings, and modifying SMTP parameters
 - View Only: No administrative rights granted
 - **Allow Analysis:** Grants the user rights to analysis features in the product
 - Full Rights: Grants full analysis rights to view, edit and create graphs, reports and other analysis items
 - View only: Restricts user from making modifications
 - **Allow Server/Device Maintenance:** Grants the user rights to manage server and device schedules
 - Full Rights: Grants full rights to view and edit maintenance schedules
 - View Only: Restricts user from making modifications
 - **Allow Agent Install/Download:** Grants the user rights to download and install an agent
 - **Restrict Access to Only These Groups:** Restricts the user from viewing a particular inventory group
 - **Restrict Access to Only These Servers/Devices:** Restricts the user from viewing particular servers and or devices
 - **Restrict Access to Only These Watches:** Restricts the user from viewing particular monitoring rules and alerts

4. To have users logon with domain credentials, select the check box for 'Use Active Directory'



Configure Security and User Accounts

User/Group Name: Use Active Directory*

Description:

Password:

Verify Password:

Allow Administration: Full Rights Limited Rights View Only

Allow Analysis: Full Rights View Only

Allow Server/Device Maintenance Full Rights View Only

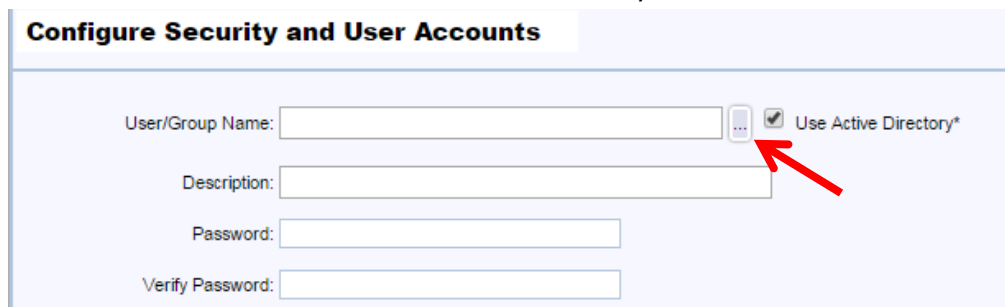
Allow Agent Install Download

Restrict Access to Only These Groups:

Restrict Access to Only These Servers/Devices:

Restrict Access to Only These Watches:

5. Then select the "... " button to browse Active Directory



Configure Security and User Accounts

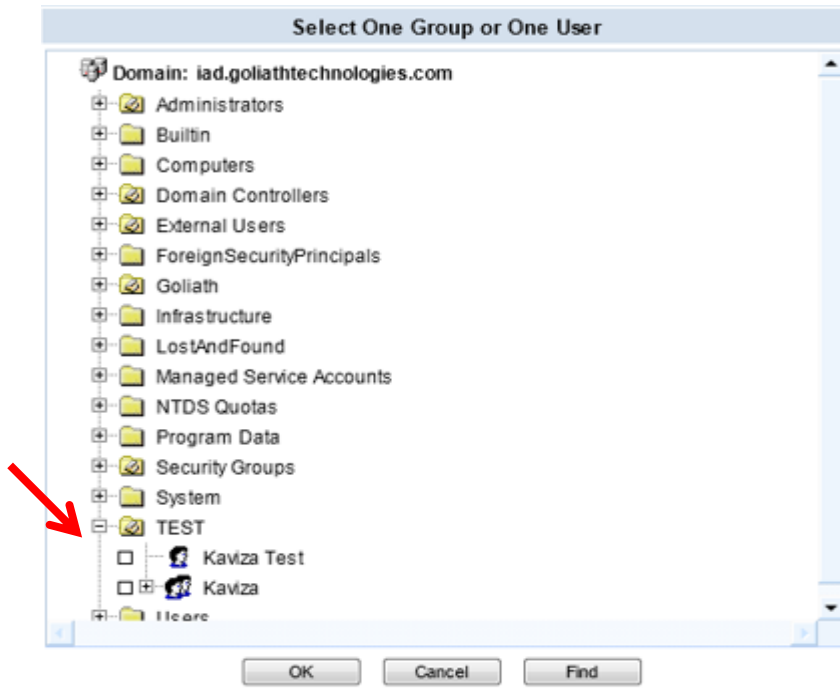
User/Group Name: Use Active Directory*

Description:

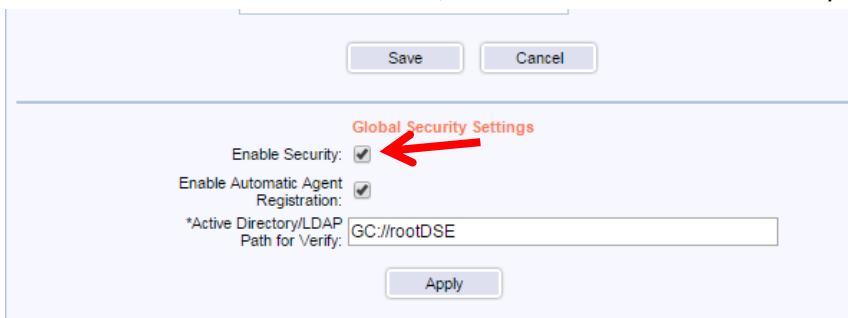
Password:

Verify Password:

6. Select the users you want to add to the product by selecting the check box for the AD group or a specific user within a group and click ok



7. Define the appropriate rights for the user and hit save. Repeat steps 2-7 to add in multiple users
8. When all the users have been added, check the box to enable security at the bottom



9. Select 'Apply' and you have completed setting up Security for your Goliath Performance Monitor. Refresh the page to be prompted with the signin page.

